

BIXOLON SAMSUNG NV Image Tool Manual

Receipt Printer

STP-103 / STP-131
SRP-275 / SRP-350
SRP-370 / SRP-372
SRP-500 / SRP-770

CONTENTS

Chapter 1. Instruction

Chapter 2. Development Precondition

2.1. Environment

2.2. Device Property

Chapter 3. NV Image Tool

3.1 Communication Configuration

3.2 Select printer model

3.3 Edit image list

3.4 Change color

3.5 Download

3.6 Save print file

3.7 Print

Appendix A Upgrade History

Notes

- (1) Reproduction of any part of this documentation by any means is prohibited.
- (2) The contents of this documentation are subject to change without notice.
- (3) Comments and notification of any mistakes in this documentation are gratefully accepted.
- (4) This software cannot be used with other equipment specified.
- (5) BIXOLON will not be responsible for any consequences
resulting from the use of any information in this documentation.

Trademarks

Microsoft Windows, Windows NT, Visual Basic are trademarks and registered trademarks of Microsoft Corporation, USA. All other company names and trademarks mentioned in this documentation are the property of their respective owners.

Copyright © 2000-2005 BIXOLON coporation

Chapter 1. Introduction

This is a manual for BIXOLON SAMSUNG NV Image Tool program.

This program helps you to download user-defined images to the flash memory in the printer and to recall and print those images with fast speed.

BIXOLON SAMSUNG NV Image Tool works in Windows 95/98/ME and NT4.0/2000/XP/2003 platforms.

Further Source

Utility Update from <http://www.bixolon.com>

Chapter 2. Development Precondition

This section describes development outline for the BIXOLON SAMSUNG NV Image Tool.

2.1. Environment

The BIXOLON SAMSUNG NV Image Tool operates under the following environment.

Computer Hardware System	IBM PC/AT or compatible
Operating Systems	Windows 9x / 2000 / XP / 2003 Windows NT 4.0
Hard Disk	Free space required – Over 1M byte
Physical Memory	Free space required - Over 32M bytes
Accessible Serial Ports	COM1, COM2, COM3 ... COM6
Accessible Parallel Ports	LPT1, LPT2, LPT3
Accessible USB ports	Windows 9x / 2000 / XP / 2003

Those users who use USB port in Windows 9x system are supposed to download and install USBPrint.inf in advance.
You can download it from www.bixolon.com

2.2 Device Property

O: Supported, X: Unsupported

Model	Serial	PARALLEL	USB
STP-103	O	O	X
STP-131	O	O	X
SRP-275	O	O	O
SRP-350	O	O	O
SRP-370	O	O	O
SRP-372	O	O	O
SRP-500	O	O	O
SRP-770	O	O	O

Model	Download Image Count	Color Support	etc
STP-103	255	Mono	
STP-131	255	Mono	
SRP-275	255 / 10	Mono / Color	
SRP-350	255	Mono	
SRP-370	255	Mono / Color	
SRP-372	255	Mono / Color	
SRP-500	255 / 10	Mono / Color	
SRP-770	255	Mono	

* If you want to download in **SRP-770**, select model “**SRP-350**”.

* If you want to download **mono color image** in **SRP-370,372**, select model “**SRP-350**”

Chapter 3. NV Image Tool

This program is designed only for BIXOLON SAMSUNG receipt printers.

3.1. Communication Configuration

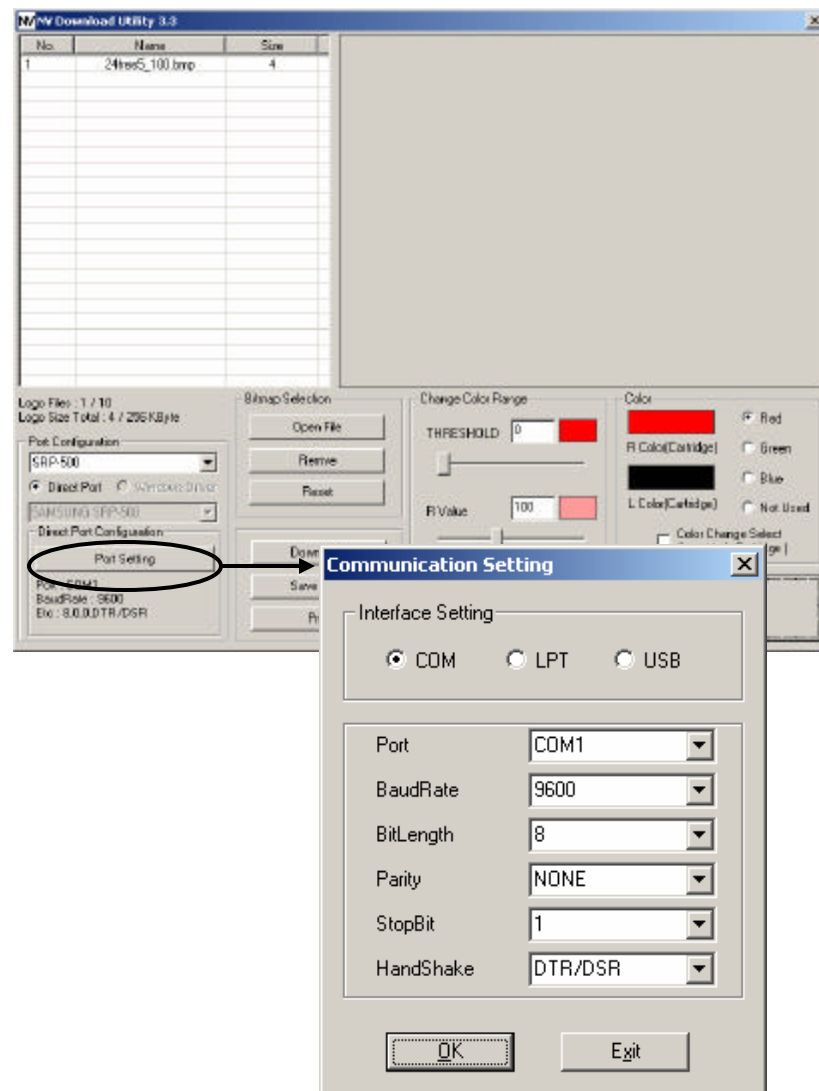
Click port setting and select a port according to printer interface.
Click "OK"

FAQ> How can I find printer interface setting?
You can find it through printer **self test**.

How to do self test: Turn on the printer while pressing down the feed button.

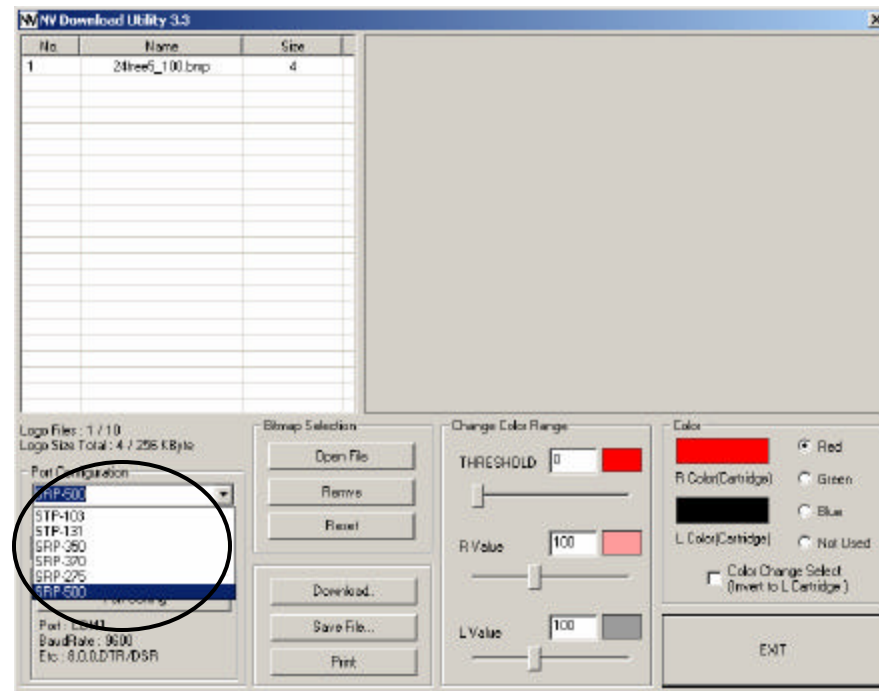
In case you download thru serial interface, it is extremely important to make sure that interface setting is the same with self test; port, baud rate, bit-length, parity, stop-bit, and handshake.

Trouble shooting: When continuous communication error happens, check whether any other device, device driver or utility program uses the same port.



3.2. Select Printer model

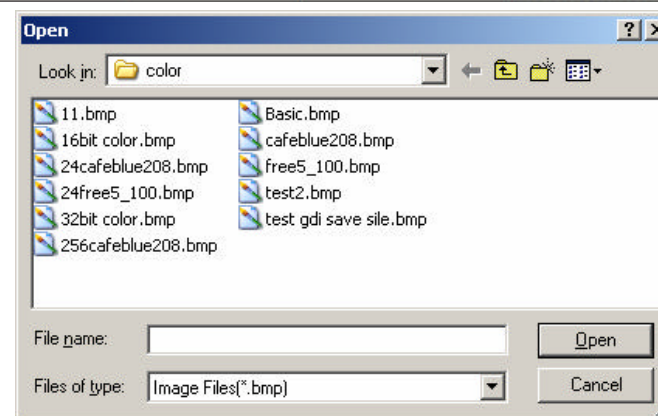
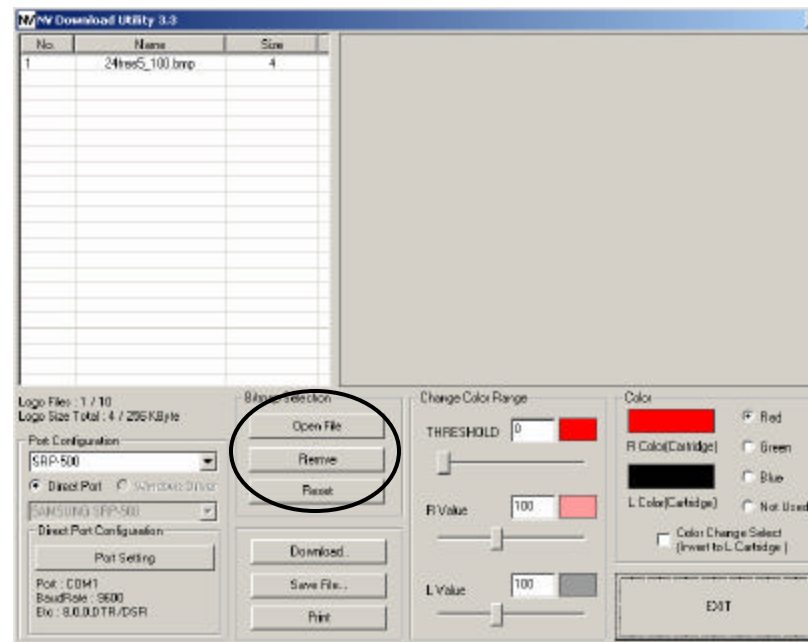
Select printer model you use.



3.3. Image List Management

You can open/add, delete and reset images with three buttons in Bitmap selection.

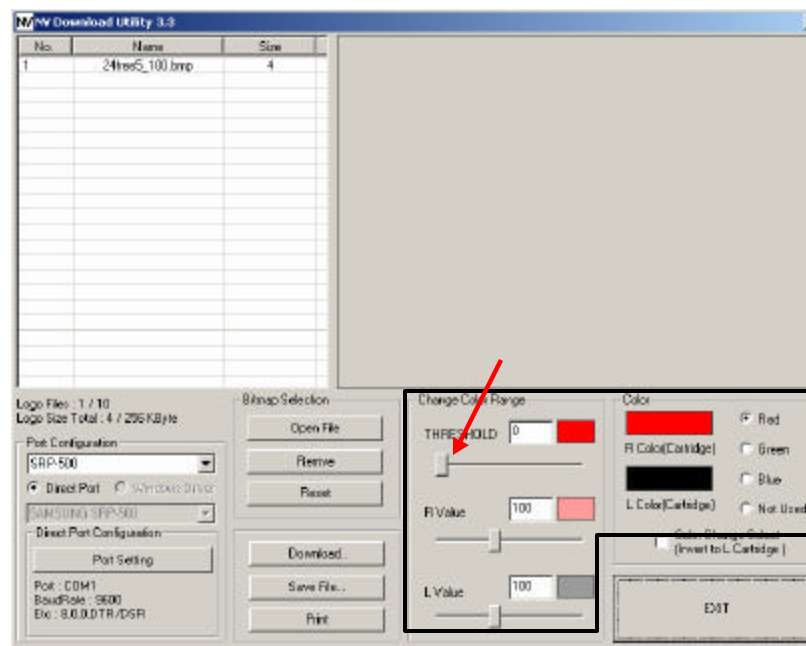
Only **bmp** type of image is available to download.



3.4. Change Color

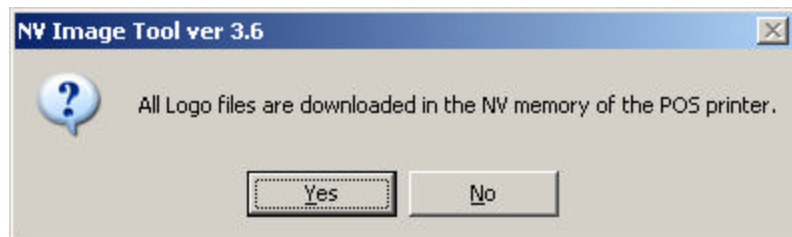
You can change the color of image, when you use two color printers.

Just try to move the horizontal scroll bar as you can see in the picture.



3.5. Download

When you click **download** button, pop up message and the steps are different based on printer model.

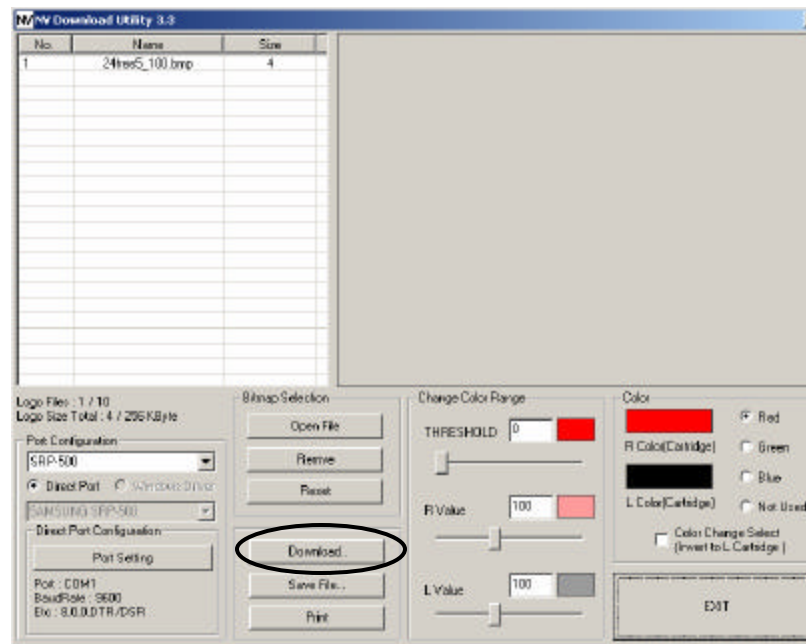
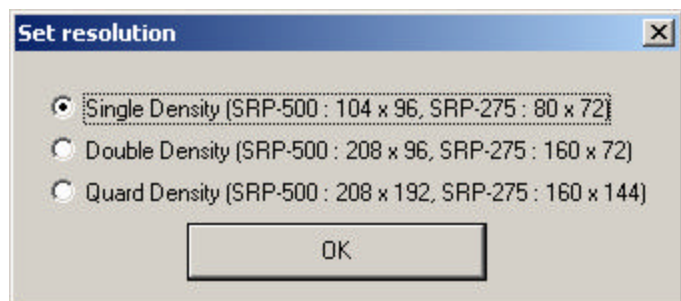


STP-103, STP-131, SRP-350

All the images in the printer will be erased.
New images in the program will be downloaded.

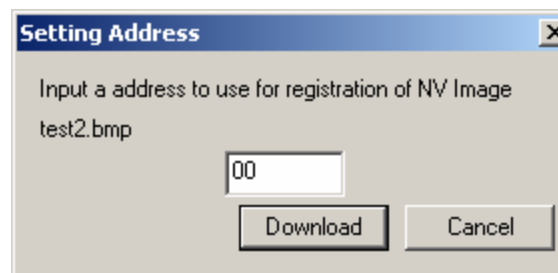
SRP-275, SRP-500

All the images in the printer will be erased.
You can select image resolution like below.



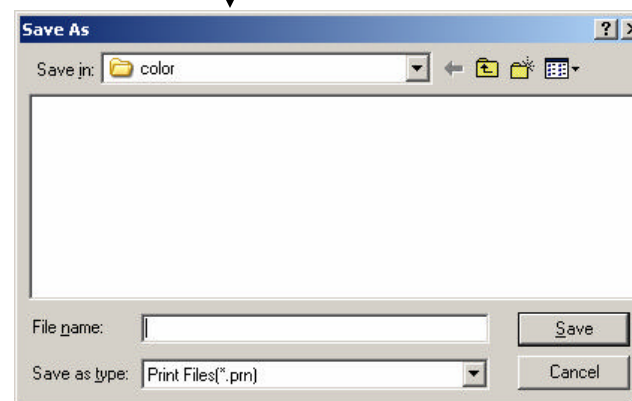
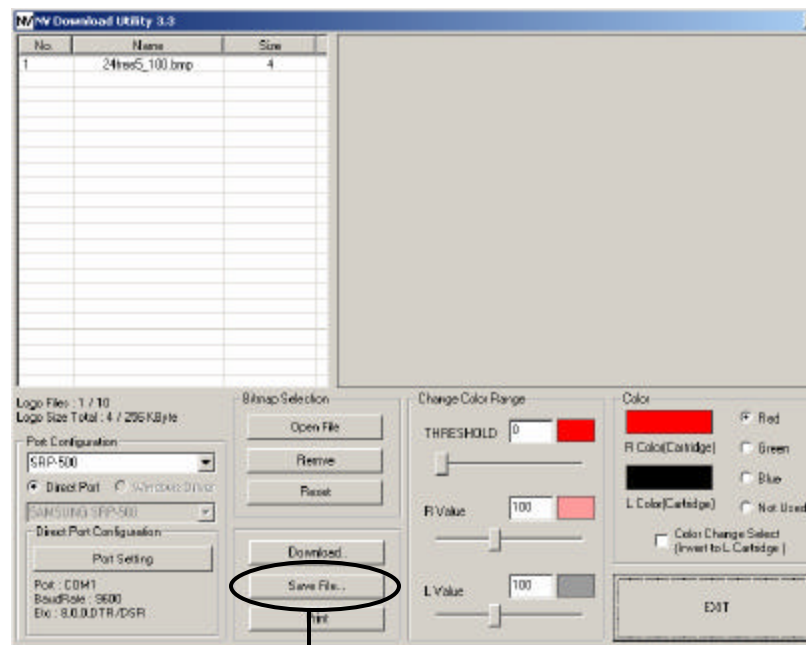
SRP-370

You can indicate image address you want to download image.
Images in other addresses will not be erased.
In case there is existing image (s) in the address you indicated,
Downloading fails and error message pops up.



3.6. Save Print File

You can save color-converted image to your PC.
(SRP-370 does not support this feature.)

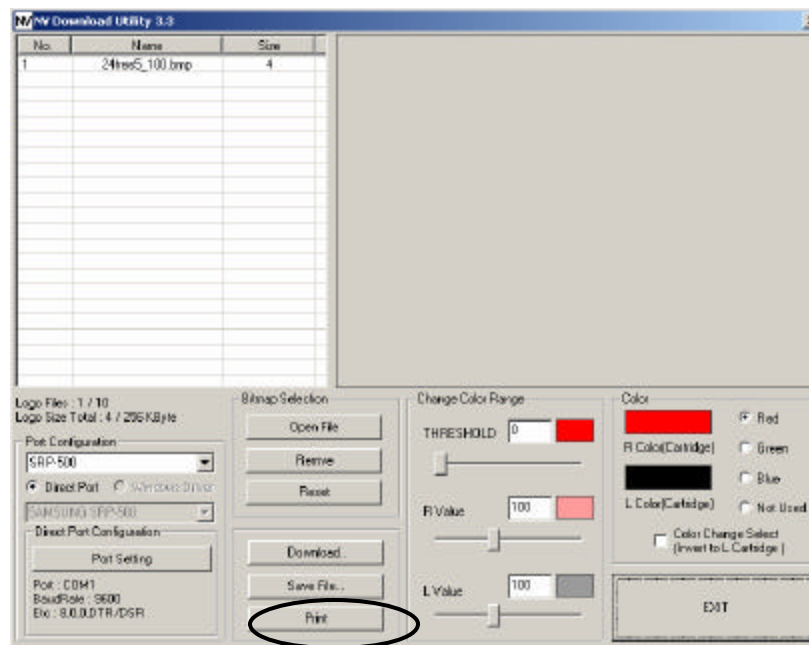
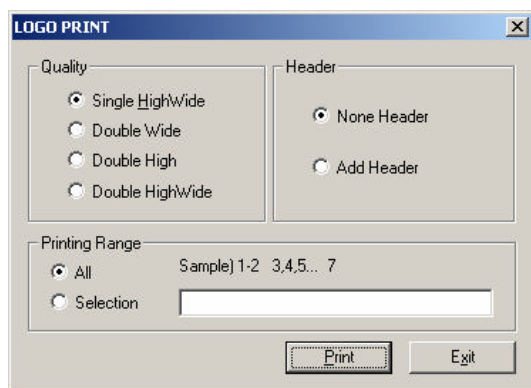


3.7 Print

You can print stored image (s) in flash memory.

STP-103, STP-131, SRP-350

You can print all the images in the flash memory.
Or you can print only selected image.



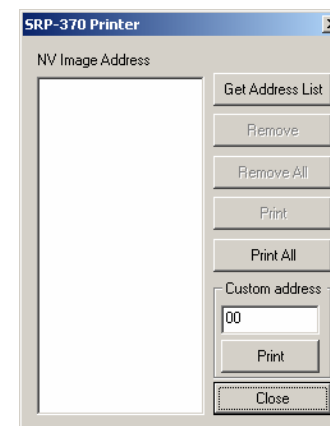
SRP-275, SRP-500

You can print all the images in the flash memory.

SRP-370

After getting stored address, you can print, add, delete and remove all.

If interface is USB, you can not to get stored address.



Appendix A Upgrade History

Version	Description	Release Date	Etc
2.0	1 st Release Version UI Updated(Easy control)	Dec. 1. 2003	
2.1	2bit Bitmap Image antagonistic color Bug	Dec 27. 2003	
2.2	Image Conversion Values Updated File Size Limit Updated File Open Bug	Feb 27. 2004	
2.3	Add "Save Print File" Menu	Oct 11. 2004	
3.1	Add Model Type (SRP-275, SRP-500, SRP-370) Updated Image Change Algorithm	Nov 16. 2004	
3.2	Updated resolution (SRP-275, SRP-500)	Nov 19. 2004	
3.3 beta	Updated Serial Interface : Supported Baudrate	Nov 21. 2004	
3.4 beta	Updated Serial (read routine for SRP-370)	Dec 26. 2004	
3.5	Updated Parallel Interface Added SRP-372 model Updated USB Interface	Jan 6. 2005	
3.6	Updated Display UI	Jan 31. 2005	
3.7	Updated SRP-370,372 mono color supported (select model SRP-350) Updated SRP-770(version : receipt only) download (select model SRP-350) Add Error Message	Mar 15. 2005	
3.8	Updated color conversion routine Added "Download progress bar" for SRP-370 Updated Image list management	May 16, 2005	
3.0.9	Updated Image list process Updated Manual Updated Version management(ISO 9001)	Sep 21. 2005	